



58-99 cm (length, excluding tail)

Beavers

Eat: Willows

Eaten by: Gray wolves



2.1-2.4 m

Elk

Eat: Grasses, willows, other flowering plants

Eaten by: Gray wolves, grizzly bears, coyotes



2.1-3.5 m

Bison

Eat: Grasses, willows

Eaten by: Gray wolves



47-70 cm

Yellow-Bellied Marmots

Eat: Grasses; other flowering plants

Eaten by: Coyotes



8-10 cm (length, excluding tail)

Deer Mice

Eat: Grasses; other flowering plants

Eaten by: Coyotes



28-30 cm

Uinta Ground Squirrels

Eat: Grasses, other flowering plants, fungi

Eaten by: Coyotes, grizzly bears



7-35 cm

Earthworms

Eat: Dead organic matter, fungi, bacteria

Eaten by: American robins



0.5-1 mm

Mites

Eat: Nematodes, fungi

Eaten by: Beetles



1-30 mm

Beetles

Eat: Springtails, mites

Eaten by: American robins

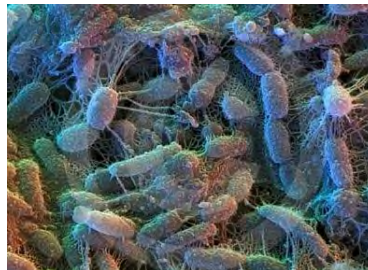


0.25-5 mm

Springtails

Eat: Fungi

Eaten by: Beetles

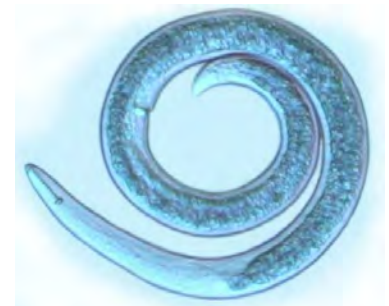


2-6 μ m

Bacteria

Consume: Dead organic matter

Eaten by: Protista, nematodes, earthworms



0.1-2.5 mm

Nematodes

Eat: Protista, fungi, bacteria

Eaten by: Mites



<80-400 cm

Willows

Eaten by: Beavers, elk, bison



Grasses *(including seeds)*

Eaten by: Bison, elk, deer mice, Uinta ground squirrels



Dead Organic Matter

Consumed by:
Bacteria, fungi, earthworms



Other Flowering Plants

(including berries)

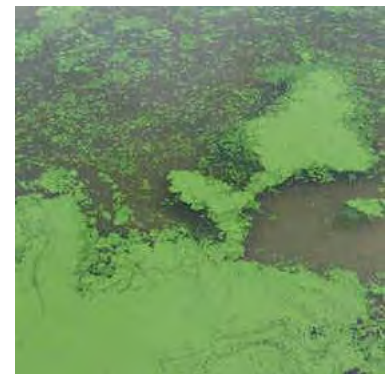
Eaten by: American robins, deer mice, elk, grizzly bears, Uinta ground squirrels, yellow-bellied marmots



Fungi

Consume: Dead organic matter

Eaten by: Springtails, mites, nematodes, earthworms, Uinta ground squirrels



Algae

Eaten by: Cutthroat trout



23-28 cm

American Robins

Eat: Earthworms, beetles, other flowering plants

Eaten by: Snakes and birds of prey (*not included in this food web*)



15-50 cm

Cutthroat Trout

Eat: Algae

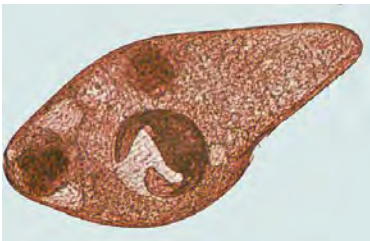
Eaten by: Grizzly bears



1.8-3.3 m

Grizzly Bears

Eat: Other flowering plants, cutthroat trout, Uinta ground squirrels, elk



<1 mm

Protista

Eat: Bacteria

Eaten by: Nematodes



1-1.4 m

Coyotes

Eat: deer mice, Uinta ground squirrels, yellow-bellied marmots, elk

Eaten by: Gray wolves



1.4-2 m

Gray Wolves

Eat: Elk, beavers, bison, coyotes